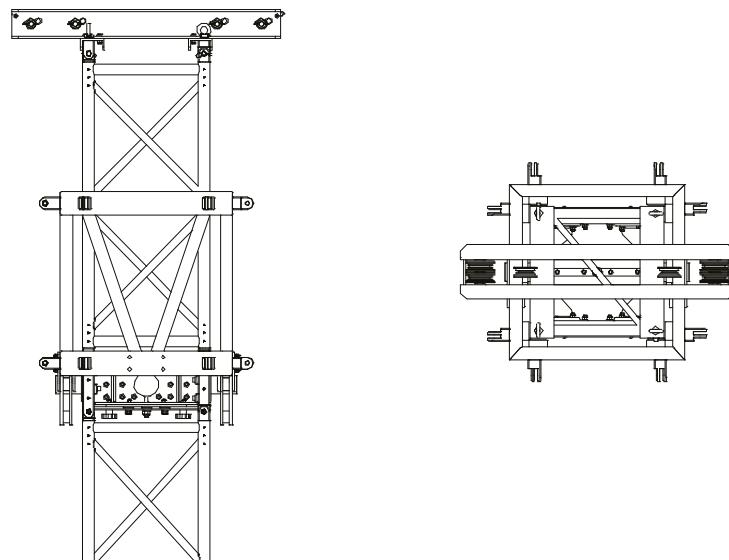


Maxitower 63



The Maxitower MT63 is the new tower for the MyT Virtue truss system. Featuring LITEC's innovative safety block with telescopic tube, it provides unrivaled levels of convenience and safety. With a maximum height of 25 metres and load capacity of 11.5 tons at 15 metres, the MT63 is the right choice for your very large and demanding projects.

Maximum tower height	→	25 m
Lifting system	→	chain hoist
Vertical main truss	→	QL63A
Compatible trusses (with suitable sleeve block)	→	MyT Virtue
Maximum lifting load capacity	→	11.5 tons @ 15 m

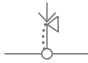



Maxitower 63

- Ø 60 x 5 mm main chords for increased load bearing
- New mechanical safety block with telescopic tube
- Constructed from EN AW 6082 T6 aluminium



Axial load table

SPAN		
	F _{am.}	F _{am.}
m	kg	kg
1	12386	12093
2	12355	11768
3	12319	11436
4	12278	11099
5	12232	10757
6	12180	10409
7	12123	10056
8	12061	9200
9	11993	7512
10	11920	6053
11	11842	4796
12	11759	3711
13	11670	
14	11576	
15	11476	
16	10829	
17	9886	
18	8994	
19	8153	
20	7362	
21	6618	
22	5918	
23	5258	
24	4636	
25	4046	