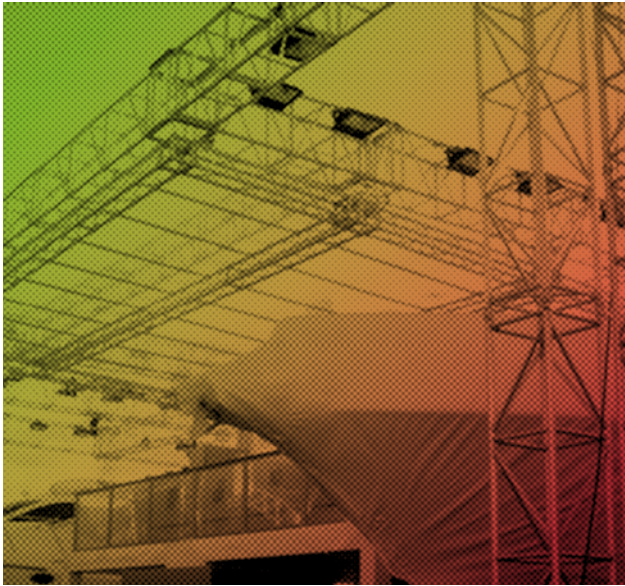


# RL76A

## 18 x 16 m Double-pitch



These roof systems are high-performance structures that feature a connection made through steel forks. This line was designed when a high loading capacity is required together with wide spans.

Dimensions		18 x 16 m
Heights range*	→	from 7 to 11 m
Main truss	→	RL76A
Towers	→	6 x Maxitower 40
Uniformly distributed load UDL **	→	9000 kg
Chain hoists	→	1000 kg
Total weight	→	8200 kg
Volume	→	76 m <sup>3</sup>
Set-up time & number of workers	→	5 hrs / 6 w

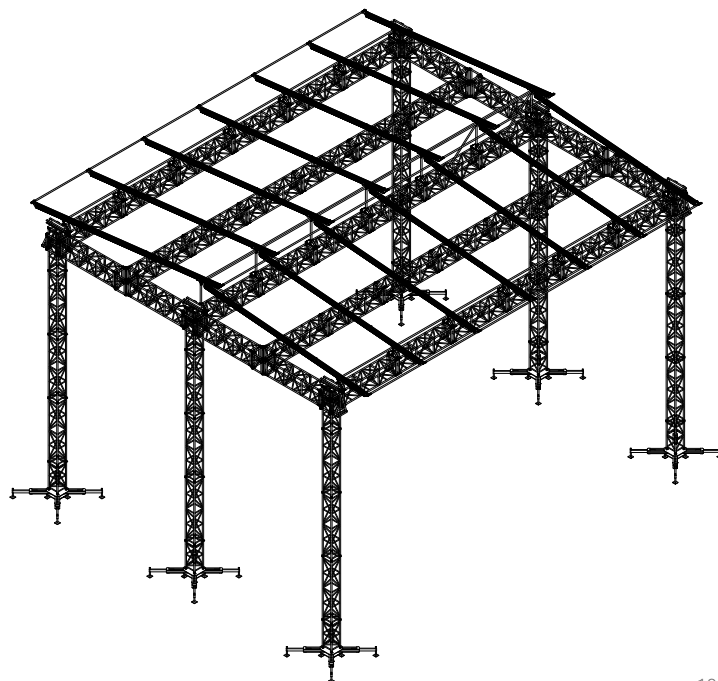
\* Range suggested according to the dimensions of the roof system.

\*\* Indicative loading data for use in environments without wind. For details and further information, please consult the technical specifications or contact our engineering department or distributors.

For details and further information, please consult the technical specifications or contact our engineering department or distributors.

The examples and data shown on these pages are necessarily indicative owing to the extreme variability of the conditions in which the structures may be assembled. Each installation must be provided with a suitable quantity of ballast, as shown on the product certificates.

This line of structures was created in compliance with European standards. Use of these systems is governed by laws which vary according to the country they are assembled in. They must be put together in compliance with the local regulations in force.



## RL76A 18 x 16 m

Side extensions for suspensions outside the set may be added to the front.

