

ET200 THERMAL IMAGER



**SOCIAL
DISTANCING
SOLUTIONS**

ET200 Thermal Imager



LITEC



**SOCIAL
DISTANCING
SOLUTIONS**



Quick temperature capture



Hot spot auto-tracking



Resolution
640 X 480



USB-computer connection
to export images



Highly sensitive sensor



3.5 inch full viewing angle
TFT Display Screen

THERMAL IMAGER ET200 – Main Features

- specifically designed to monitor body temperature (BODY MODE function) with non-contact detection, so zero risks of cross infection, in a non invasive way during FESTIVALS, EXHIBITIONS, EVENTS as well as schools, hospital, offices or any places open to public in general;
- BODY MODE SET UP: precision $\pm 0,5$ °C - range 20-45 °C from 0,5 to 1,5 meters distance;
- handheld, lithium ion battery powered (4-6 hours autonomy), infrared thermal imager;
- continuous real time reading with “automatic detection” of the highest temperature spotted with a detection time of only 0,5 sec!!!;
- 3.5” TFT - 640X480 resolution on board display;
- sound alarms when detecting dangerous temperature (pre-set by the user);
- image storage capacity 6 GB via built-in flash memory, accessible via Micro USB;
- tripod mount optional for fixed installation;



THERMAL IMAGER ET200 – Display Functions Overview

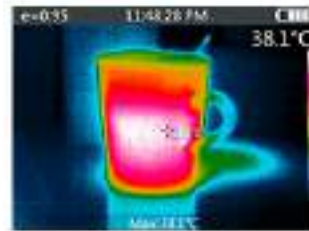


SOCIAL
DISTANCING
SOLUTIONS



THERMAL IMAGER ET200 – Four Colors Imaging Mode

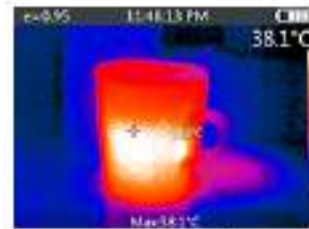
- Our Thermal Imager provides 4 type of color palettes functions: SPECTRA, BLACKHOT, IRON, WHITEHOT for you to choose the appropriate palette to better show the details you need of the targeted object.



Spectra



BlackHot



Iron



WhiteHot



THERMAL IMAGER ET200 – Other Fields Of Application



SOCIAL
DISTANCING
SOLUTIONS



1+ Body Temperature Test



3+ Mechanical maintenance



5+ Distribution box inspection

2+ PCBA Test



4+ Building defect repair



6+ Floor heating equipment test



THERMAL IMAGER ET200 – Holster



SIDE VIEW



BACK VIEW



FRONT VIEW



LITEC



**SOCIAL
DISTANCING
SOLUTIONS**

Dimensions:
width 120 mm.
depth 120 mm.
height 270 mm.



TOP VIEW

THERMAL IMAGER ET200 – Technical Specifications

Charging Method	5 Volts - USB A Power adapter 100-220 Volts – 2A - 10W
Colour mode	spectra / white hot / black hot / Iron
Connector	micro USB
Drop	withstands a drop of 2 meters (6.5 feet)
Material emissivity	selectable between 0.01 e 1.00
Field of view	27°* 35°
Focusing method	fixed focal length minimum focal length is 0.5m
Full Temperature measurement range	from -20 °C up to 330 °C
Housing protection class	IP54
Image format	.JPG - 640 x 480 pixels
Image frame rate	9Hz
Image fusion model	fusion (0%, 25%, 50%, 75%, 100%)
Infrared resolution	208*156
Infrared spectral band	8µm to 14µm
Menu interface	ergonomic and user friendly interface, easy to operate
Power supply type	lithium ion battery (replaceable)
Precision full scale	±2 °C below 100°C reading or 2% above 100°C reading
Screen resolution	3.5 inches, 640 * 480TFT
Spatial resolution	1.7mrad
Storage	built-in 6GB
Thermal sensitivity	0.07°
Vibration and shock	2G, IEC 68-2-6
Visible pixels	300 thousands pixels
Warm up time	10 minutes

**TRIPOD MOUNT
BRACKET**
(available as a
separate accessory)

