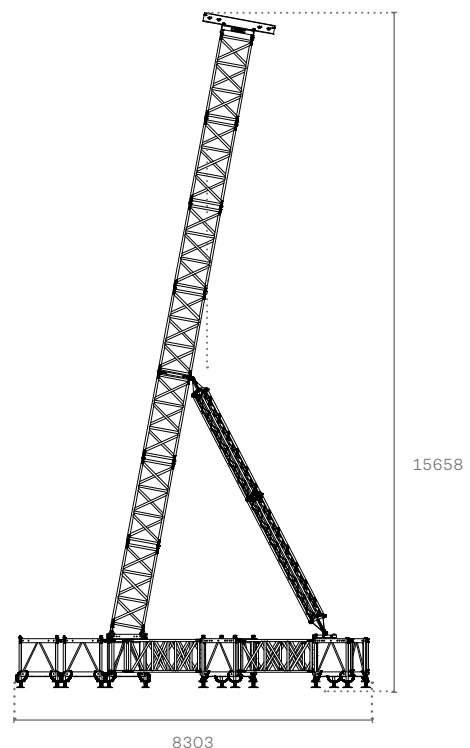
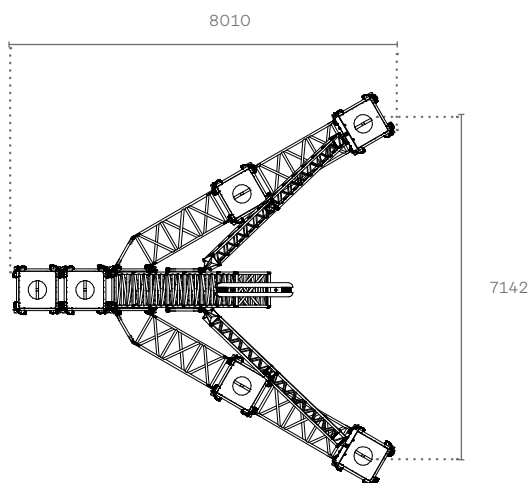


Flyintower 15-2,000



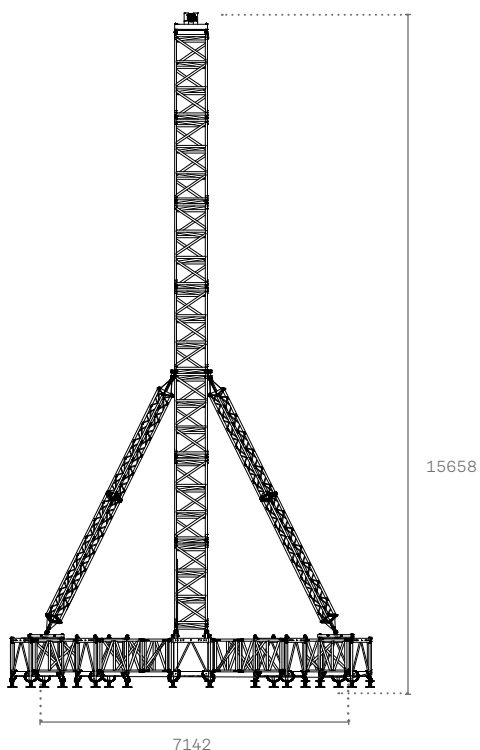
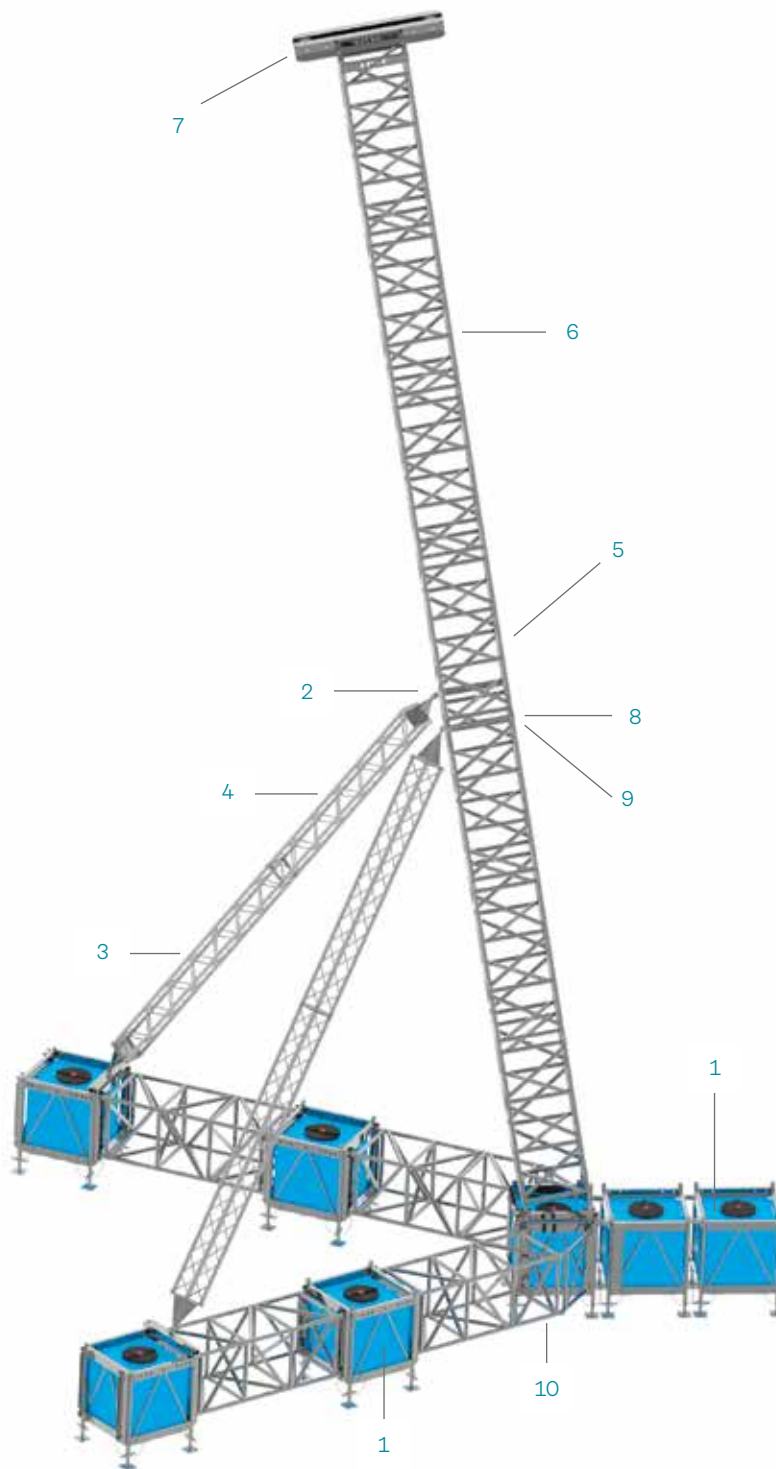
Support Tower for audio systems. Designed in QL76A, this new Flyintower is suitable for 2,000 kg loads and can reach the height of 15 meters, thus ensuring sturdiness and rigidity on relevant heights. It also utilizes QH30SA trusses as stabilizing elements and is equipped with fork connections.

Maximum tower height	→	15 m
Vertical main truss	→	QL76A
Base dimensions	→	830 x 801 cm
Maximum lifting load capacity	→	2,000 kg



Flyintower 15-2,000 components

- 1 → Water Ballasts
- 2 → RAC0001
- 3 → QH30SA350
- 4 → QH30SA300
- 5 → QL76200AB
- 6 → QL76200A
- 7 → MTT76F
- 8 → KHLF
- 9 → KHLB
- 10 → FL76071M2P



Flyintower 15-2,000

In the concept of the new Flyintower are also included water ballasts, already integrated in the system. They consist of aluminium cages and plastic tanks to be filled with water. The new Flyintower allows you to use your own stock of QL76A trusses.