

RF40



High Load 40 x 29 cm rectangular-section aluminium truss. It is the most compact truss of the High Load series with a fork connection. Suitable for quite long spans, it keeps an optimum ratio between maximum load and truss deflection. The horizontally-aligned fork ends allow the truss to be used with only minimal accessories to build grid structures.

Chords A
Extruded tube \varnothing 50 x 3 mm
EN AW-6082 T6

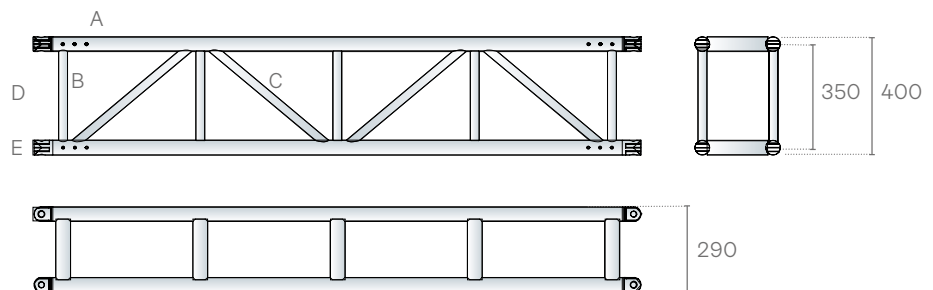
Diagonals B
Extruded tube \varnothing 30 x 3 mm
EN AW-6082 T6

Braces C
Extruded tube \varnothing 30 x 3 mm
EN AW-6082 T6

Braces D
extruded tube \varnothing 50 x 3 mm
EN AW-6082 T6

Ends E
Aluminium fork connector
EN AW-6082 T6

Connection systems
KHL P: cylindrical pin + safety R-clip



Linear elements

code	cm	kg
RF40100	40 x 29 x 100	13.2
RF40200	40 x 29 x 200	16.8
RF40300	40 x 29 x 300	20.0
RF40400	40 x 29 x 400	23.2



Load table / Spigot connection

SPAN	Unif. distributed load			Centre point load			Third point load			Quarter point load			Fifth point load		
	Point load	Full load	Central deflection	Point load	Full load	Central deflection	Point load	Full load	Central deflection	Point load	Full load	Central deflection	Point load	Full load	Central deflection
m	kg/m	kg	mm	kg	kg	mm	kg	kg	mm	kg	kg	mm	kg	kg	mm
3	1928	5785	5	2524	2524	4	1593	3186	4	1222	3665	4	1009	4038	5
4	1257	5029	11	2084	2084	7	1351	2702	8	1059	3176	9	887	3549	9
5	852	4262	18	1770	1770	12	1171	2343	14	932	2797	15	771	3084	16
6	616	3696	28	1537	1537	18	1032	2065	21	832	2496	24	666	2662	24
7	458	3205	38	1356	1356	26	920	1840	30	750	2250	34	585	2340	34
8	353	2822	50	1211	1211	35	830	1659	41	667	2000	45	519	2077	45
9	279	2515	64	1090	1090	45	754	1508	53	595	1786	58	467	1867	58
10	226	2264	80	990	990	57	690	1380	67	537	1610	73	423	1692	73
11	187	2054	98	905	905	70	634	1269	83	487	1462	88	386	1543	89
12	156	1875	117	832	832	85	586	1172	101	445	1336	106	354	1416	107
13	132	1721	138	768	768	101	544	1088	120	409	1227	125	326	1305	127
14	113	1586	160	711	711	119	505	1010	141	377	1131	146	302	1207	149
15	98	1467	185	660	660	138	471	942	164	349	1047	169	280	1120	172
16	85	1361	211	615	615	158	440	881	188	324	972	193	261	1042	197
17	74	1266	239	574	574	180	413	825	215	301	904	218	243	972	223
18	66	1180	268	536	536	204	387	774	243	281	843	246	227	908	252
19	58	1099	299	502	502	230	364	727	273	263	788	275	212	850	282
20	51	1026	331	471	471	257	342	684	305	245	736	306	199	796	314

Cantilever load table / Fork connection

SPAN	Unif. distributed load			Centre point load	
	Point load	Full load	Central deflection	Point load	Central deflection
m	kg/m	kg	mm	kg	mm
1	2165	2165	1	1593	1
2	790	1581	4	1035	7
3	413	1238	11	762	18
4	252	1010	22	598	34
5	169	846	36	488	55
6	120	722	55	408	81
7	89	624	77	348	111

Axial load table

H m	kg
3	17392
6	8148
9	3852
12	2222
15	1407

Load table has been prepared in accordance with UNI ENV 1999-1-1 (Eurocode 9). When calculating the allowable loads it is assumed that the load is suspended from the bottom chord and the truss is supported from the top chord at each end. The values shown in the table are the allowable static loads that can be applied to the truss. This is the live load or the payload.

The self weight of the truss has been taken into account when calculating the values in the table. It should be noted that this are idealised loading conditions and the User shall re-analyze the truss for the loading conditions which prevail for the application being considered.

RF40 System

High Load structures can be extended using specially designed accessories for suspension, transportation and reinforcement, including hooks, corner frames and skates. Only forked connectors with steel junction pins are used. Designed to withstand the highest stress and load levels, they offer guaranteed compatibility with the whole series. Gates are short, flat section High Load elements generally used when putting together corners or tower sleeve blocks. Code numbers shown under the pictures refer to the shape and make it easy to identify.

Connections

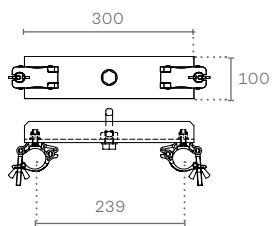
				
KHLB M20 screw bolt + spring washer	KHLD M20 screw nut + spring washer	KHLF Female fork connector complete	KHLG M20 Lifting Eye	KHLM Male fork connector complete
				
KHLP Cylindrical pin + 3 mm safety R-clip	KHL180A 180° double fork aluminum connector	KHL180S 180° double fork steel connector	KHL90LA 90° double fork alum. connector, left	KHL90LS 90° double fork steel connector, left
				
KHL90RA 90° double fork alum. connector, right	KHL90RS 90° double fork steel connector, right	KHL180AL149R Alusfera 76 spacer A	TZHL01 FL assembly kit	

Accessories

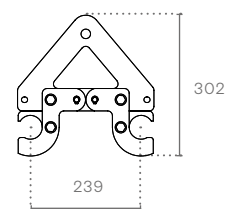
				
KF30L2135 Kit for 135° corner	CBQ3040 4 points Bridle Hook for 29/40 cm truss	CS029-40 Ceiling support for 30-40 truss series - silver	KF30P3030 Plate for 90° corner incl. Bolts	FF40023M9P Heavy Load 40 Gate - 23.9 cm



C030
Bar hook for 29 cm. truss



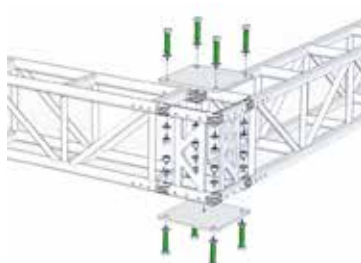
CBT3040
2 points Bridle Hook for 29/40 cm. truss



Corner solutions

A Corner 90°

KF30P3030



B Corner 120°

FF40023M9P



C Corner 135°

KF30L2135

